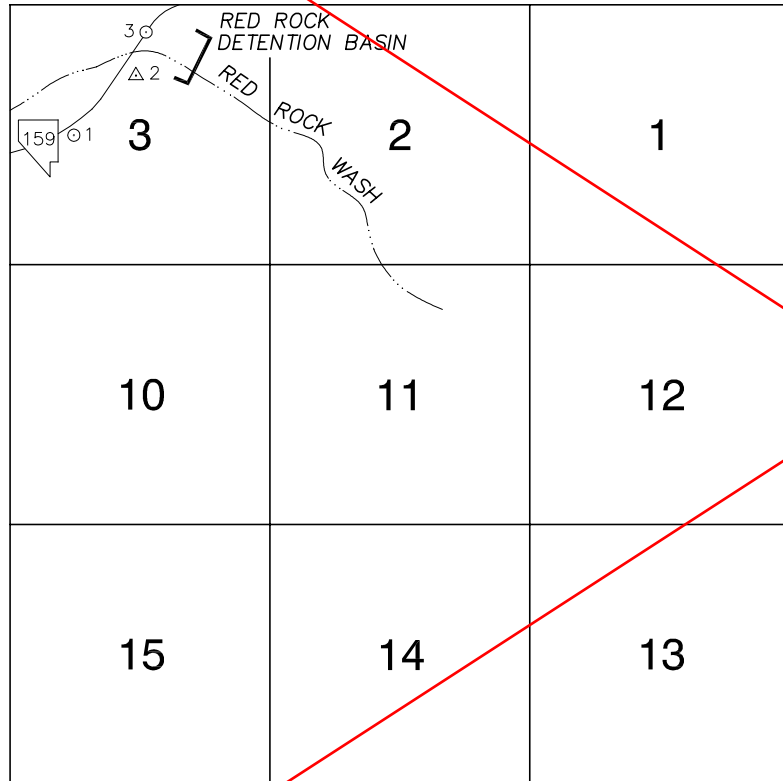


FOR REFERENCE ONLY

\*2018 BENCHMARK NETWORK ADJUSTMENT SUPERSEDES THE 2003 BENCHMARK BOOK

Township 21 South, Range 59 East  
Northeast Quarter

CHARLESTON BLVD.



NORTH AMERICAN VERTICAL  
DATUM OF 1988  
- ALL ELEVATIONS IN METERS -

No.	STATION	ELEVATION (METERS)		DESCRIPTION
1	8C19 3W6 1998	993.124	F N D	NDOT BRASS CAP IN CONCRETE, 50' SOUTH OF CENTERLINE OF STATE ROUTE 159, 2 MILES NORTHEAST OF THE INTERSECTION OF CALICO BASIN RD. AND S.R. 159. NDOT STATION 751+69.00
2	D 368 1963	989.599	F N D	USC&GS BRASS CAP IN ROCK OUTCROP, SOUTH SIDE OF RED ROCK WASH BRIDGE, ON A SMALL RIDGE 120' SOUTH OF THE ROAD, 22' HIGHER THAN THE ROAD.
3	9LV19 3N6	982.517	F N D	U.S. ARMY CORPS. OF ENGINEERS BRASS CAP, 100' NORTH OF THE RED ROCK WASH BRIDGE IN THE PAVEMENT, STAMPED "LV 3 1992"
4				
5				
6				
7				
8				
9				
10				
11				

CLARK COUNTY VERTICAL CONTROL v.2003

CLARK COUNTY SURVEYOR'S OFFICE  
5051 SOUTH PARADISE ROAD  
LAS VEGAS, NEVADA 89119  
(702) 455-0640

CONVERSION FACTOR:  
METERS X  $\left(\frac{3937}{1200}\right)$  = U.S. SURVEY FEET

REVISED 2003

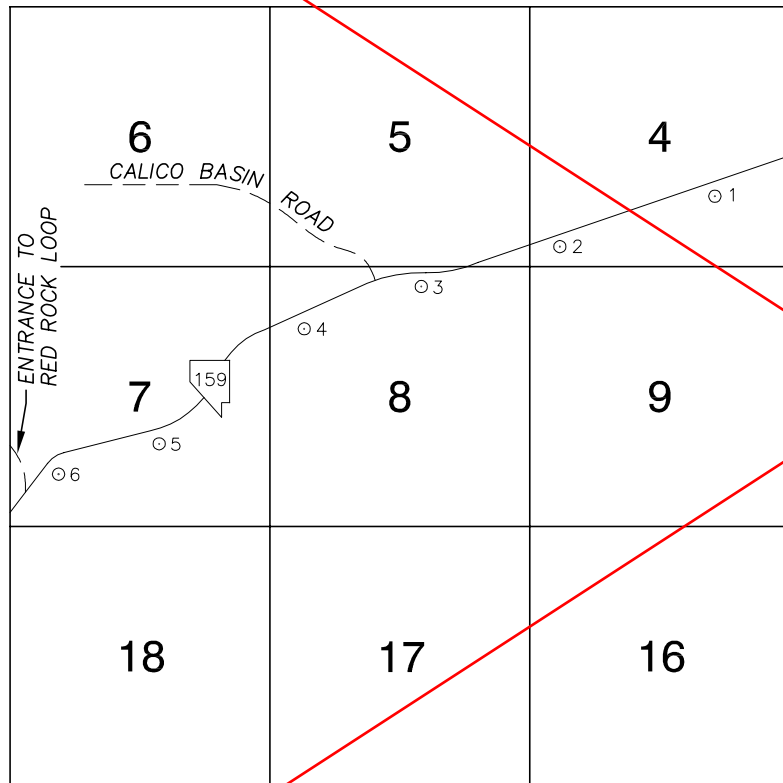
SHEET  
1 OF 1

21-59  
NE

FOR REFERENCE ONLY

\*2018 BENCHMARK NETWORK ADJUSTMENT SUPERSEDES THE 2003 BENCHMARK BOOK

Township 21 South, Range 59 East  
Northwest Quarter



NORTH AMERICAN VERTICAL  
DATUM OF 1988  
- ALL ELEVATIONS IN METERS -

No.	STATION	ELEVATION (METERS)		DESCRIPTION
1	8C19 4SE6 1998	1008.116	F N D	NDOT CAP IN A CONCRETE MONUMENT, 50' SOUTH OF CENTERLINE OF STATE ROUTE 159, 1.6 MILES NORTHEAST OF THE INTERSECTION OF CALICO BASIN RD. AND S.R. 159. NDOT STATION 729+09.17
2	8C19 4SWS 1998	1035.511	F N D	NDOT CAP IN A CONCRETE MONUMENT, 75' SOUTH OF CENTERLINE OF STATE ROUTE 159, 0.8 MILES NORTHEAST OF THE INTERSECTION OF CALICO BASIN RD. AND S.R. 159. NDOT STATION 684+54.46
3	8C19 8N4 1998	1048.571	F N D	2" ALUMINUM CAP IN A CONCRETE MONUMENT, 75' SOUTH OF CENTERLINE OF STATE ROUTE 159, 0.3 MILES NORTHEAST OF THE INTERSECTION OF CALICO BASIN RD. AND S.R. 159.
4	8C19 8NW6 1998	1070.204	F N D	NDOT CAP IN A CONCRETE MONUMENT, 50' SOUTH OF CENTERLINE OF STATE ROUTE 159, 0.2 MILES SOUTH OF THE INTERSECTION OF CALICO BASIN RD. AND S.R. 159. NDOT STATION 631+69.75
5	8C19 7S6 1998	1097.037	F N D	NDOT CAP IN A CONCRETE MONUMENT, 50' SOUTH OF CENTERLINE OF STATE ROUTE 159, 0.7 MILES NORTHEAST OF RED ROCK SCENIC LOOP ENTRANCE. NDOT STATION 594+30.14
6	8C19 7SW6 1998	1117.470	F N D	NDOT CAP IN A CONCRETE MONUMENT, 50' SOUTH OF CENTERLINE OF STATE ROUTE 159, 0.2 MILES NORTHEAST OF RED ROCK SCENIC LOOP ENTRANCE. NDOT STATION 570+17.36
7				
8				
9				
10				
11				

CLARK COUNTY VERTICAL CONTROL v.2003

CLARK COUNTY SURVEYOR'S OFFICE  
5051 SOUTH PARADISE ROAD  
LAS VEGAS, NEVADA 89119  
(702) 455-0640

CONVERSION FACTOR:  
METERS X  $\left(\frac{3937}{1200}\right)$  = U.S. SURVEY FEET

REVISED 2003

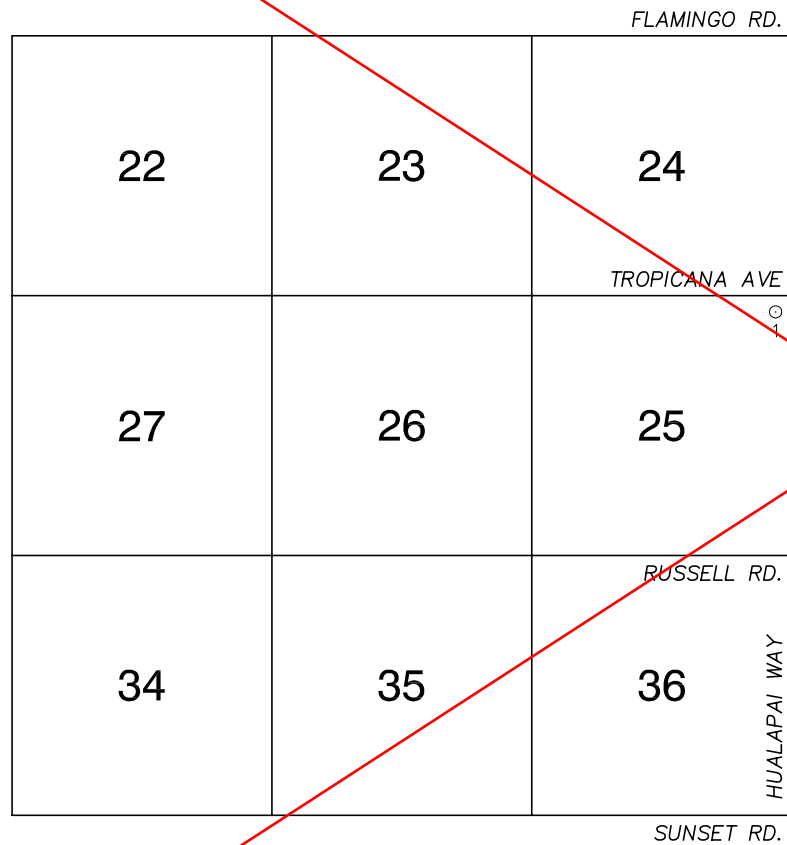
SHEET  
1 OF 1

21-59  
NW

FOR REFERENCE ONLY

\*2018 BENCHMARK NETWORK ADJUSTMENT SUPERSEDES THE 2003 BENCHMARK BOOK

Township 21 South, Range 59 East  
Southeast Quarter



NORTH AMERICAN VERTICAL  
DATUM OF 1988  
- ALL ELEVATIONS IN METERS -

No.	STATION	ELEVATION (METERS)	DESCRIPTION
1	8C19 25NES 1998	833.988	RIVET AND ROUND ALUMINUM PLATE IN CONCRETE BASE OF A LVVWD AIR-VAC (VENT) IN THE SOUTHWEST QUADRANT OF HUALAPAI WAY AND TROPICANA AVE.
2			
3			
4			
5			
6			
7			
8			
9			
10			
11			

CLARK COUNTY VERTICAL CONTROL v.2003

CLARK COUNTY SURVEYOR'S OFFICE  
5051 SOUTH PARADISE ROAD  
LAS VEGAS, NEVADA 89119  
(702) 455-0640

CONVERSION FACTOR:  
METERS X  $\left(\frac{3937}{1200}\right)$  = U.S. SURVEY FEET

REVISED 2003

SHEET  
1 OF 1

21-59  
SE